

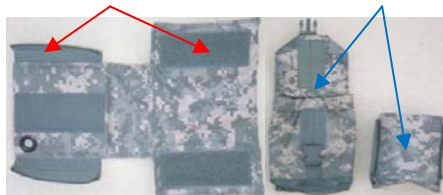


### STEP 2: Attaching the MOLLE pouches (Continued)

Attaching your Hydration Pouch to your H-Harness: Remove your shoulder straps and weave the two long attachment straps (red arrows) through the two outer channels (blue arrows) and snap at the end of the pouch.



CTP1-L Insert: Connect all of the velcro sides on the CTP-1 together (red arrows) so they make a "cup" size holder to fit in the canteen pouch (blue arrows).



Insert the CTP1-L into the canteen holder (red arrow). You will notice a strip of velcro on the back of the CTP1-L and a strip inside the back of the canteen holder. Connect those pieces to secure the CTP1-L.



6



### STEP 2: Attaching the MOLLE pouches (Continued)

Adjusting the Waist: Along with adjusting your "Quick Release" buckles you can adjust the waist on the side of the H-Harness. Open the waist from the bottom of the harness to expose the side strap (red arrow). Next remove the strap (blue arrow).



Attach the adjustable strap in a position that will be comfortable for you to wear (red arrow). Secure the waist back into position (blue arrow). Complete the adjustment by doing the same thing to the opposite side of the waist.



You can adjust the waist to be as tight as you want (red arrow) or as big as you want (blue arrow).



7



### STEP 2: Attaching the MOLLE pouches (Continued)

#### Homestation Kit Set-Up

Your Homestation belt can be set up based on your mission and local SOP's. Your drop-down holster can be attached directly to your belt on your ABU trousers or to the belt insert that runs through the padded MOLLE belt. On the newer design for the padded belt there are two accessible slits on the left & right underside to attach your drop down holster. The picture below is one possible configuration of your pouches attached to the padded equipment belt.



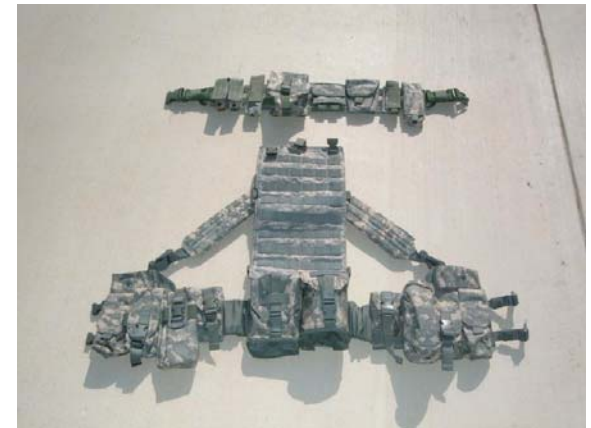
THANK YOU FOR SERVING OUR GREAT NATION!



8



### DF-LCS Complete Kit Set-Up



This foldout is designed to help you with the following:

**STEP 1:** Identifying your MOLLE pouches and what makes up the complete Defensor Fortis Load Carriage System (DF-LCS)

**STEP 2:** Properly attaching the MOLLE system to your H-Harness and belt

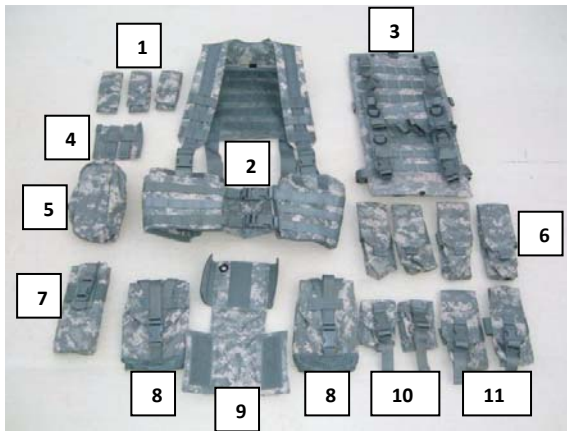
Remember your Squadron SOP's and your current mission will dictate what pouches you would use and where the pouches will be positioned

1



### STEP 1: Identifying the MOLLE pouches

#### RIFLEMAN KIT



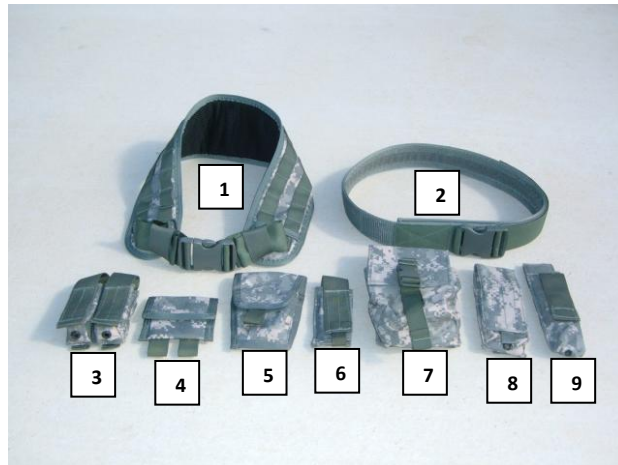
- 1-M9 Single mag (3ea) 2-H-Harness
- 3-Hydration Pouch 4-Alice Adapter
- 5-Medical Pouch 6-M4 DBL Mag (4ea)
- 7-Radio Pouch 8-Canteen Pouch (2ea)
- 9-CTP1-L Insert 10-Grenade Pouch (2ea)
- 11-M4 Triple Mag (2ea)

**NOTE:** The CTP1-L insert is used to secure your AN/PVS-14 night vision device while you are not using it.

2



### HOMESTATION KIT



- 1-Padded Belt 2-Belt Insert
- 3-Dual M9 Mag Pouch 4-Latex Glove Pouch
- 5-Dual Handcuff Pouch 6-Flashlight Holder
- 7-Utility Pouch 8-4oz Chem Spray Pouch
- 9-Expandable Baton Holder

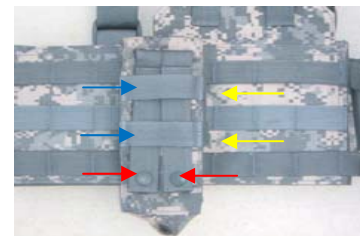
**The Rifleman Kit and Homestation Kit make up the complete DF-LCS Kit**

3

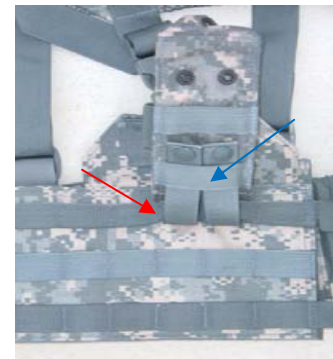


### STEP 2: Attaching the MOLLE pouches

The picture below shows an M4 Double Mag Pouch lying on the harness where it is to be mounted. You are looking at the backside of the pouch. Note the 2 attachment straps which snap onto the pouch at the bottom (red arrows) and the 2 horizontal webbing strips on the pouch (blue arrows) which line up with the spaces between the webbing on the harness (yellow arrows).



The first step is to un-snap the attachment straps on the pouch and pull them out from under the horizontal straps. Then feed the attachment straps through two channels of the webbing on the harness, be sure only to go through one strap (red arrow). Bend the attachment straps back up and feed them through the channels in the first strap on the pouch's backside (blue arrow).

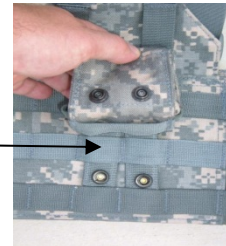


4

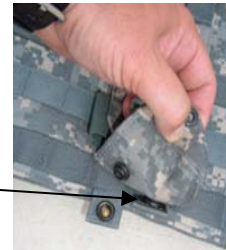


### STEP 2: Attaching the MOLLE pouches (Continued)

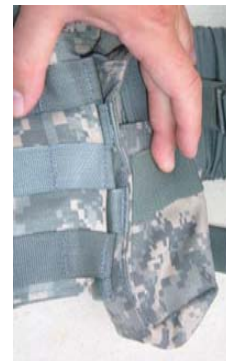
Bring the attachment straps back down and feed them through the next lowest row of webbing on the harness.



Feed the attachment straps through the final row of webbing on the back of the pouch and the harness then snap them back into place.



Looking at the side of the pouch, once it is attached, the attachment straps should feed back-and-forth through the webbing on the harness and back of the pouch.



5

All of your MOLLE pouches will be attached the same way and will use more straps & channels if the pouches are bigger.

